

# O.T. Hodge Chile Parlor Opens in Ferguson

In 1904, a chile developed by O.T. Hodge sold at the St. Louis Worlds Fair. When the fair closed, demand for the chile was so great that seventeen O.T. Hodge Chile Parlors were opened between Jefferson Avenue and the Mississippi River by 1930. Early on, each chile parlor made its own chile on premise but as business grew O.T. built a manufacturing plant in South St. Louis. This plant not only supplied the Chile Parlors, but also produced a canned chile for the retail grocery market. Now a modernized plant on Oregon Avenue in St. Louis produces the chile product.

have already estimated 10 new stores in the next two years.

The Ferguson store, located at 250 South Florissant Road is the same design that the parlors have been for one hundred years. It is located in a wonderful old building, fully renovated, for your dining enjoyment, with a fine O.T. Hodge management team.

Open for breakfast, lunch and dinner, O.T. Hodge has a full menu. For breakfast, they serve eggs, ham, steak, sausage, and bacon . . . all served with American fries and toast. Also on

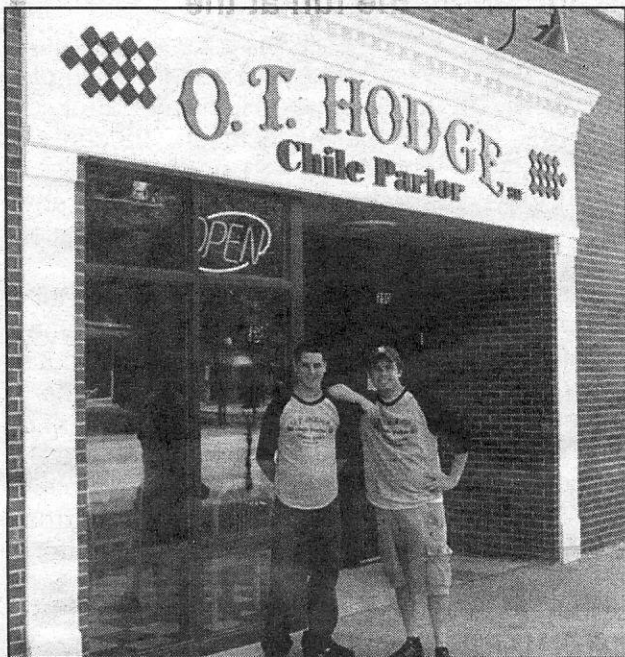
the breakfast menu is french toast, Belgian waffles, hot cakes, biscuits and gravy, breakfast sandwiches, omelets and English muffins.

Lunch and Dinner includes chile with our without beans, spaghetti with chili, Mac-Ala-Mode (spaghetti topped with 2 eggs and covered with chile), tamale with our without chile, chile dog, nacho cheese & chile, ham-burger, cheeseburger, patty melt, hot dog, BLT, grilled ham and cheese, Philly cheese steak, and Kosher hot

dog. But . . . the star of the menu is the Slinger (2 cheeseburgers, hashbrowns and chile).

So stop by Ferguson's newest eating establishment and enjoy the old fashioned flavor of chile as it should be served.

(See ad on Page 11)



Manager Jeff Clark with part owner, Joe Schaumberger, welcome customers to the new Ferguson store.

Although O.T. died in 1942, the family continues to own the business and maintains the original recipe.

Today, the only O.T. Hodge Chile Parlor is located right here in Ferguson, but plans for independent owners to open new parlors